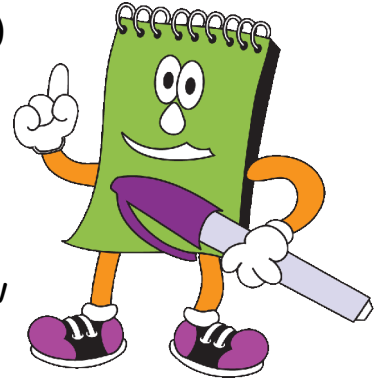






Trinity Lutheran School
Kindergarten Classroom Supply List
2010-2011

- ✎ Tote Bag - The tote bag should be large enough to hold 9" x 13" papers and a folder. No backpacks, please. Tote from Pre-K would be fine. (Hobby Lobby, Wal-Mart, no zippers)
- ✎ Plastic Portfolio - 1 folder with 2 pockets on bottom, no prongs. (Wal-Mart)
- ✎ Mat - Kindergarten mat (Wal-Mart brand)
- ✎ Mat Cover - Choose one from Kindergarten Room or you will need to buy material and sew this cover. Light weight cotton, flannel broadcloth, etc. works best. Size approximately 52" x 22" after hemming. Mat will slip into cover like a pillowcase.
- ✎ Headset - for computer; place inside a zip-lock bag with name on it and on the bag
- ✎ Cube box of tissues - Everyone (chapel project)
- ✎ Last name A-R: Large roll of paper towels and large box of tissues
- ✎ Last name S-Z: Cube box of tissues and bottle of Germ-X hand sanitizer
- ✎ Bag of Rice - small bag to be used in our water/sand table (not Minute Rice)
- ✎ Velcro Tennis Shoes - for PE; must be new or clean
- ✎ Check box - Empty box in which blank checks were received



All of the items below should be "Name brand only"

- ✎ Crayola Colored Pencils - 1 box, 12 ct., only, basic colors (Wal-Mart)
- ✎ Crayola Crayons - 3 boxes, large, washable, 8 ct. (Wal-Mart)
- ✎ Crayola Water Color Paints - 1 set, 8 colors (Wal-Mart)

-  Elmer's Washable School Glue - 1 bottle, 4 oz. (Wal-Mart)
-  Elmer's Washable School Glue Sticks - 2 regular size sticks (Wal-mart)
-  Pink Pearl Eraser - 1 eraser
-  Index Cards - ruled 3" x 5", 50 ct., 1 pkg.

All other supplies (pencils, scissors, paper, etc.) are furnished. Please write your child's name on your child's tote bag, mat, mat cover, headset bag, and shoes. Please do not write names on any other item. Instead, please place items in a paper or plastic bag(s), write name on the bag(s), and bring to August 16 Open Kindergarten Room. I will label items not shared by class. Thank you!



Operation Christmas Child

Our Global Outreach program this year is Operation Christmas Child. Again we are asking you to send in, as part of your Chapel Offerings, items to help us fill up a box. Each child will need to bring in an empty shoe box and please send in any of the following supplies:

- | | |
|----------------------|-------------------|
| Pens (blue or black) | Small memo books |
| Crayons | Solar calculators |
| Pencil sharpeners | Toothbrush |
| Colored pencils | Washcloths |
| Band-Aids | Markers |

Once school starts you will receive more information about this program and the collection dates for these items.